

KOENIG & BAUER

# alphaJET<sup>5</sup>

## Continuous Inkjet (CIJ)



we're on it.

EN



**Uncompromising reliability**  
**Coding**  
**with an outstanding value for money.**

For over 45 years we have been developing and manufacturing high quality coding technology products at our site in Veitshöchheim, Germany. Our focus is on first-class quality, outstanding performance and all this in combination with unbeatable reliability. We're on it.



Continuous Inkjet (CIJ) coding is ideal, when speed and legibility of characters are important for applying variable dates directly at the production line.

In addition to precise printing results, our alphaJET printers offer you a very high degree of reliability in everyday production. Perfectly matched inks ensure the quality for your application. Put us to the test.

**alphaJET<sup>5</sup> HS** sets the standard for industrial marking at high speed. This inkjet is already equipped with comprehensive software, e.g. for cable marking.

**alphaJET<sup>5</sup> HS-M** is the groundbreaking adaptation of the well-proven alphaJET 5 HS. With this printer, you have more variety from our versatile ink portfolio at your disposal for product marking.

**alphaJET<sup>5</sup> SP** has the architecture for incomparably precise coding and marking of even the smallest objects, e.g. in the automotive, electronics or medical industries.

## Versatile, irrespective of industry

### Food and Sweets

Mark your product plastic packaging, tin-plate, cardboard or film, with a current date, batch number and codes – according to your wishes. If required, simply add your individual promotion.



### Beverages and Dairy

No matter whether you pack in glass, PET, cans, paper, composite packaging, foil or bags: You will obtain a permanent and high-contrast coding.



### Cosmetics, pharmaceuticals and drugstore products

Designs and high-quality graphic compositions are printed accurately and precisely, also on glass and plastic.

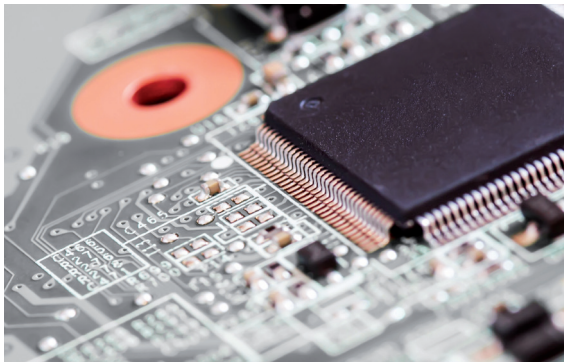


alphaJET continuous inkjet printers mark perfectly in all industries, on a wide variety of materials and surfaces.



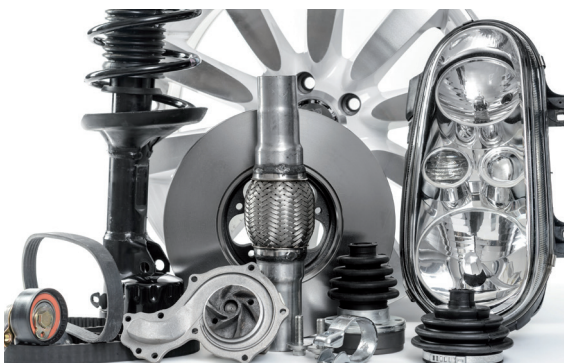
### **Cable and tubes**

Regardless of the environmental conditions, you can mark cables, pipes, wires or hoses, clearly and legibly; even at very high speeds. We offer you high-contrast inks in various colours and the best adhesive properties for your application.



### **Electronics and components**

Semiconductors, sensors, terminals, connectors, printed circuit boards, etc. – Mark your product in detail with a company logo, batch number, 1D or 2D codes for traceability, quality assurance and legal specifications.



### **Automotive**

Datamatrix code, QR code, logo and other data in excellent readability and sharpness. Protect original products from counterfeiting. Get a clear identification by means of a precise marking.

## Facts!

Thanks to simple, intuitive operation and intelligent software solutions, you get the best performance and gain around

**+ 20 %**  
**productivity**

From high-quality materials in a modern, quality-assured production, coding systems are built according to the latest state of the art with an

**uptime > 99 %**

Achieve the lowest consumption on the market, minimum operating costs and absolutely calculable follow-up costs

**> 27 %**  
**savings**

Compared to the average market level.

**Do you want to make the most of savings potentials?**

The alphaJET has the most efficient solvent recovery system RE-SOLVE Ultra. This saves you money every day. Clever financing solutions (e.g. rental or pay per code) and well thought logistics and service concepts increase your savings potential.

**You require perfect start-stop behaviour from your marking device?**

The combination of optimised nozzle closure, nozzle flushing and head heating form the Smart Start Technology integrated in the alphaJET5.

Even if your printer is in stand-by mode for a longer period of time, intermediate start-up or intensive cleaning processes are not necessary before restarting.

This saves valuable time.

# In a nutshell.

**You want more colour contrast for your coding?**

Operate your alphaJET 5 inkjet with pigmented ink. Our large ink portfolio, from high-contrast to food grade to well adherent ink for challenging materials, our selection has the right answer for your requirements.

**The marking should not lead to a loss of quality of the typeface even with increasing production?**

The reliable alphaJET printers have been the fastest continuous inkjet printers on the market for years and are ready for your production increase.

**Are your company's production facilities located internationally?**

We offer you a competent sales and service team worldwide. The alphaJET does not only print in other languages, its colour touch display can be easily adapted to many language variants (e.g. Arabic, Cyrillic, Chinese and many more).

**Is simple integration / control important to you?**

The alphaJET5 has the matching interfaces to be easily connected to your machinery. Its smart integration offers you all possibilities for the future. Incidentally, you can also centrally operate, monitor and control all alphaJET printers with the modular PC software code-M and even verify the print image in real time with *print & check*.

## Technical specifications

# alphaJET<sup>5</sup> HS alphaJET<sup>5</sup> HS-M alphaJET<sup>5</sup> SP



alphaJET<sup>5</sup> HS

alphaJET<sup>5</sup> HS-M

alphaJET<sup>5</sup> SP

### Performance

Line speed max.	1.300 m/min	700 m/min	1.300 m/min
Line speed at 2,5 mm character width	600 m/min	390 m/min	695 m/min
Max. lines	4	5	5

### Print head

Nozzle size	50 µm	62 µm	42 µm
Active Ink Flow	✓	✓	✓
Smart Start Technology	✓	✓	✓
Nozzle closure	✓	✓	✓
Supply hose length	4 m	4 m / 6 m	4 m

### Ink

Standard	✓	✓	✓
High-contrast	✓	✓ ✓	✓
Special	✓	✓ ✓	✓

### Operation

Touchscreen	10,4"	10,4"	10,4"
Camera interface	✓	✓	✓
code-M	✓	✓	✓
Special software	✓	✓	✓

### Safety

Protection class*	IP 65	IP 65	IP 65
Cooling function	✓	✓	✓
RE-SOLVE Ultra*	✓	✓	✓

### Dimensions (H x W x L; mm)

Housing	592 x 320 x 320, 23 kg	592 x 320 x 320, 23 kg	592 x 320 x 320, 23 kg
Print head	190 x 47 x 40, 2 kg	190 x 47 x 40, 2 kg	190 x 47 x 40, 2 kg



# alphaJET<sup>5</sup>

## **F**lexibility

Wider ink portfolio for almost every application: high-contrast, sustainable, adhesion properties, special performance, etc.

Smart Start Technology for perfect start-stop performance

Many state-of-the-art solutions are included as standard

## **I**ntegration

Easy integration due to compact design and clever brackets

Interfaces offer smart integration possibilities into machinery and networks

Easy integration via wizards and On-Screen help

## **V**elocity

Highest print speeds

Ultra fast handling and data processing

Smart Start Technology for perfect start-stop performance

Improved design makes service even faster and easier

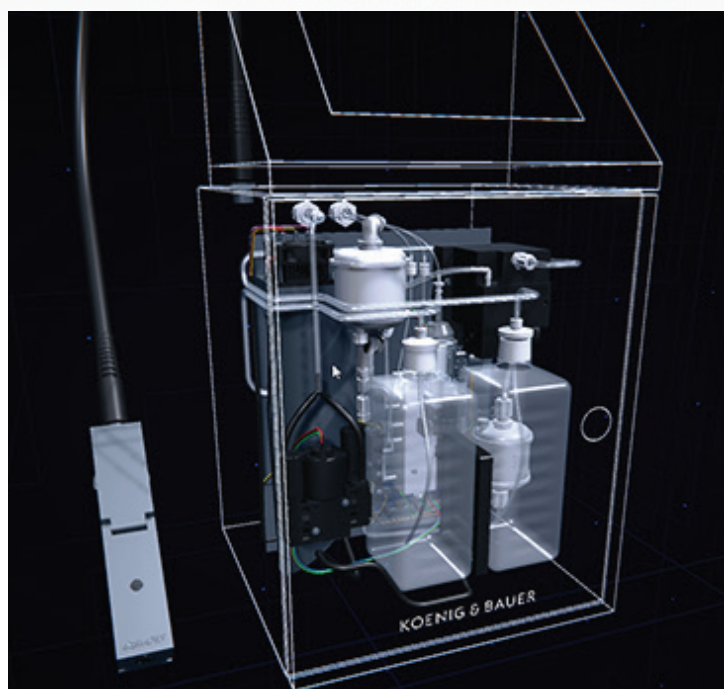
## **E**ndurance

Promised service life for 20.000 hours on the pump motor - equivalent to approx. 11 years in single-shift operation

Extended interval for filter change

Top result in the TCO\*-calculation due to favourable prices for consumables, low solvent consumption and low-maintenance operation

alphaJET Continuous Inkjet printers ensure accurate results and excellent reliability in any application.



### **Smart Start Technology**

is the optimised combination of

- Nozzle shutter
- Nozzle flushing
- Print head heating

Smart Start Technology, Active Ink Flow and extremely precise pump pressure control ensure the alphaJET<sup>5</sup>'s perfect start-stop behaviour and consistent print quality.

The inkjet that is ready for immediate use even after weeks of downtime with only minimal cleaning effort.

alphaJET<sup>5</sup> HS  
alphaJET<sup>5</sup> HS-M  
alphaJET<sup>5</sup> SP



# Easy integration into your production line

Unique details and functional accessories  
make your coding even better



### Display

A large, full-colour touch screen

- simplifies intuitive operation
- provides real time information about the coding process
- displays the print text in the editor WYSIWYG

### Software solutions

Extend the alphaJET<sup>5</sup> with a software solution that is convenient for you. Many state-of-the-art solutions are included as standard with your alphaJET<sup>5</sup>. Simplify your operation and avoid incorrect settings (e.g. with a hand-held scanner). You can conveniently prepare texts from the desktop, control and monitor your production with one or more modules of the code-M software suite.

### Camera interface *Print & Check*

Take advantage of camera-based production reliability. Combined marking and verification of variable texts and codes in real time is an optimal solution with Print & Check. We are happy to support you with standardised and also with individual solution recommendations.

### Print head

- Active Ink Flow ensures optimum ink viscosity. The result is a consistent superior print quality.
- The compact design allows integration even when space is limited.
- Thanks to the modular design, individual parts are very easy to clean or to exchange
- Save unnecessary traversing units and axes by rotating the print image.



# More freedom in coding

Font / Lines	Print sample	max. line speed for the font shown/lines (m/min)	
		evo / into 55/70 µm	SP 42 µm
m5	ABCDEFGH 1234567890	347.4	525
m7x5	ABCDEFGH 1234567890	287.4	487.8
m23	ABCDEFGH 1234567890	45	58.2
m32x24	ABCDEFGH 1234567890	34.2	34.8
a7x5	ABCDEFGH 1234567890	258.6	487.8
a9x5	ABCDEFGH 1234567890	187.2	301.2
a9x6	ABCDEFGH 1234567890	195	296.4
Arial 24	ABCDEFGH 1234567890	52.2	66.6
Arial 32	ABCDEFGH 1234567890	32.4	33
ocr 11x7	ABCDEFGH 1234567890	168	264.6
2-lines m5	ABCDEFGH 1234567890 ABCDEFGH 1234567890	174	276
2-lines m7x5	ABCDEFGH 1234567890 ABCDEFGH 1234567890	103.2	170.4
2-lines m15	ABCDEFGH 1234567890 ABCDEFGH 1234567890	38.4	39
4-lines m7x5	ABCDEFGH 1234567890 ABCDEFGH 1234567890 ABCDEFGH 1234567890 ABCDEFGH 1234567890	27.6	41.4
6-lines a7x5	ABCDEFGH 1234567890 ABCDEFGH 1234567890 ABCDEFGH 1234567890 ABCDEFGH 1234567890 ABCDEFGH 1234567890 ABCDEFGH 1234567890	16.8	unavailable
8-lines m5	ABCDEFGH 1234567890 ABCDEFGH 1234567890 ABCDEFGH 1234567890 ABCDEFGH 1234567890 ABCDEFGH 1234567890 ABCDEFGH 1234567890 ABCDEFGH 1234567890 ABCDEFGH 1234567890	16.8	unavailable

Print samples

Barcodes / 1D codes

GS1 128 (EAN 128)	Code 39	2/5 interleaved	EAN 13

2D codes

DMC code square	DMC code rectangle	QR code	DOT code

Nozzle size

70 µm	62 µm	55 µm	50 µm	42 µm

Text variants

italic	bold	blank strokes between strokes	character spacing (blank strokes between characters)	twin stroke / multiple stroke

Formats

Rotate 90°	Rotate 90° clockwise	mirrored	upside down	inverted / negative

Tower fonts

m5t	m7x5t

Languages

АБДЕГЖЛИЯ 12345 小字符喷码机 alphaJET系列 ٣٢١ أ ب ت ج ح خ

Logos



The print samples shown in this overview are for visualization purposes only. The real print images depend on various influencing factors such as e.g. environmental conditions, substrate, surface, etc. We would be happy to provide your personal print sample for your specific application.

alphaJET<sup>5</sup> HS  
alphaJET<sup>5</sup> HS-M  
alphaJET<sup>5</sup> SP



## 5 good reasons to choose alphaJET<sup>5</sup>

01

Due to the low consumption in combination with affordable prices you can save money.

02

Highest production reliability. Machine uptime of more than 99%.

03

Easy integration and high-speed printing increase your productivity.

04

The extensive ink portfolio allows you to react flexibly to customer wishes.

05

A worldwide competent sales and service team supports you at any time.

# At a glance

## General technical data

### Interfaces

- Network (TCP/IP)
- RS 232
- USB (file-management)
- Digital I/O port
- Potential-free programmable alarm relay
- 4-colour signal beacon (option)

### Operation

- Touch screen, graphical user interface
- Adjustable user rights
- Modular software code-M
- Windows printer driver

### Text composition

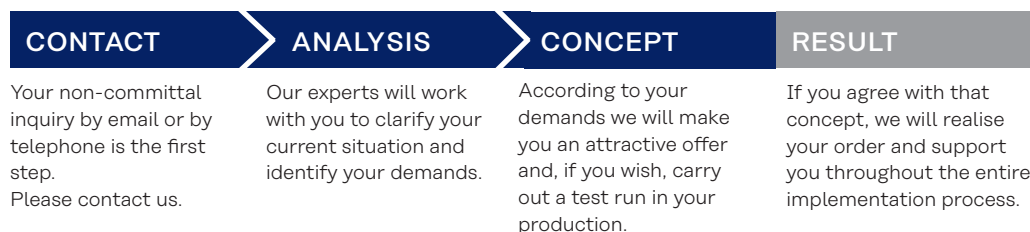
- Product counter (with auto-stop function), time functions
- Global Counter (for all print texts)
- DataMatrix, QR code, barcodes, DotCode
- Characters and logos (BMP-format)
- Data fields (can be filled via an interface)
- Prompted fields (input prompt)
- True Type Fonts (international language and character sets)

### Product attributes

- Protection class IP 65 (dust-tight and protection against splashed water)
- Smart Start Technology
- RE-SOLVE Ultra (solvent recovery)
- User management

### Connection values

- Mains voltage (AC) 86 - 264 V, ± 10 %
- max. power consumption 0.5 A / 230 V; 1 A / 110 V



**Koenig& Bauer Coding GmbH**  
Benzstraße 11  
97209 Veitshöchheim, Germany

T +49 931 9085-0  
F +49 931 9085-100  
info-coding@koenig-bauer.com

[coding.koenig-bauer.com](http://coding.koenig-bauer.com)

Text excerpts and illustrations may only be used with the permission of Koenig& Bauer Coding GmbH. Illustrations may show special equipment which is not included in the basic price of the systems. The manufacturer reserves the right to make technical and design changes.



01/2021-e